

RAIDON

iR2975 快速安裝導引

產品示意圖與配件表



- A LED A
- B LED B
- C 硬碟抽取盒把手
- D 頂出按鍵
- E 硬碟抽取盒鎖
- F 靜音按鈕
- G SATA 7+15 Pin (電源連接)
- H Hardware or GUI Mode selection switch
- I Jumper setting for RAID Mode

打開包裝外盒後,包裝內容應包含下列組件:

產品配件表



iR2975 主體 x1



快速安裝導引 x1



螺絲及鑰匙

- 請先確認相關配件與產品本身是否有受損或是缺少配件,若有任何疑問,請與您的經銷商或業務人員聯絡。
- 請前往官網 (www.raidon.com.tw) 下載說明書、驅動程式以及其餘相關資源。



V0.1 (Sep. 2023)

1

燈號說明

對應	
LED A	HDD 2
LED B	HDD 1
狀態	硬碟狀態燈
硬碟閒置	藍燈恆亮
資料存取	藍紫燈閃爍
無硬碟/硬碟故障	紅燈恆亮
資料重建 來源碟	藍燈恆亮
資料重建 目標碟	藍紫燈閃爍

※ 在Hardware Mode, JBOD狀態下如只有一顆HDD, 藍色燈號會OFF, Access時紅色燈號會閃爍

硬體安裝

請參照下列步驟,完成 iR2975 的硬體安裝:

1. 請使用背板上的RAID 控制鍵來選擇RAID 模式, 原廠預設值為RAID 1模式。另使用Hardware or GUI 開關來切換設定, 原廠預設值為Hardware模式。

Jumper setting for RAID Mode



JBOD(PM)



RAID 1



RAID 0



SPAN(BIG)

Hardware or GUI Mode selection switch



Hardware 模式



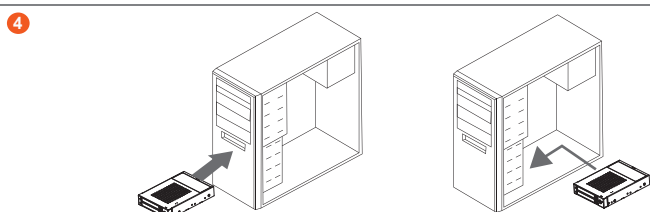
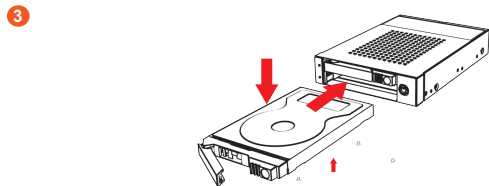
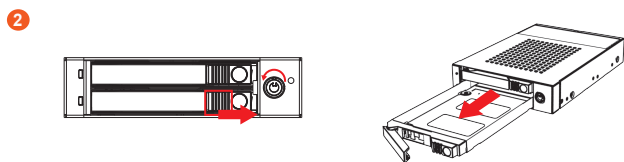
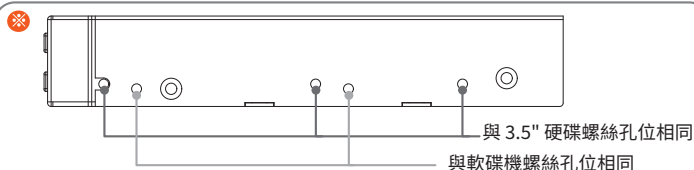
GUI 模式

- ※ RAID 1下, 需要同時裝入兩顆硬碟
- ※ RAID 1下, 初次使用會自動先進行資料重建一次 (HDD 1>> HDD2)

2

※ 螺絲孔位說明

2. 使用配件內附的鑰匙解鎖硬碟抽取盒鎖後,將頂出按鍵向右推移, 硬碟抽取盒把手便會彈開,即可取出抽取盒。
3. 在抽取盒上安裝 2.5 吋硬碟,請使用 4 顆零件包內附的小顆螺絲加以固定;再將抽取盒裝回 iR2975。



3

4. 將主體裝置在機殼上,連接相關連接線,並確認固定螺絲是否鎖上。
5. 硬體安裝完成。您可開啟電源進行相關設定與應用。
6. 完成。你的作業系統將會自行辨識硬體,辨識成功後請先完成硬碟格式化,完成後即可使用。

產品使用注意事項

1. 若想得到較佳的使用效能與選購硬碟的便利性,建議使用規格及廠牌相同的 2.5 吋硬碟。若 RAID 1 模式下,當其中有任何一顆硬碟毀損時,新更換的硬碟容量需大於或等於原硬碟容量。
2. 請確保使用的硬碟是不含壞軌的,以避免當其中一顆硬碟發生故障時,可能導致系統當機或所有資料遺失。
3. 建議於使用前決定 RAID 0 或 RAID 1 模式。使用後,若需再重新設定,請先將資料備份至其他硬碟,否則將會造成硬碟內的資料損毀。
4. 在新增或變更 RAID 模式後需重新啟動,以確保完成更新為新的 RAID 模式。
5. 強烈建議除了使用 iR2975 的資料儲存功能外,請針對重要資料備份到另一個儲存裝置上或遠端備份,雙重備份您重要的資料。若您儲存在 iR2975 的資料損毀或遺失,RAIDON 將不負任何的責任。
6. 為了保持最佳的數據安全性,不建議將疊瓦式磁性記錄 (SMR) 技術的硬碟用於磁碟陣列 (RAID) 配置。
7. 因GUI模式不支援JBOD模式,如要使用GUI模式,請先在Hardware模式下,設定在 RAID 1/0/BIG的狀態下,開啟iR2975電源完成開機,然後再將電源關閉,再調整至GUI模式。

感謝您使用 銳鉸科技股份有限公司 的產品。

本手冊裡的資訊在出版前雖然已經被詳細確認,但實際產品規格將已出貨時為準;任何的產品規格或相關資訊更新,請您直接上 www.RAIDON.com.tw 網站查詢,或直接與您的業務聯絡窗口聯繫,本公司將不另行通知。

如果您對 銳鉸科技 的產品有任何疑問,或是想獲得最新產品訊息、使用手冊或軟體,請您聯絡 supporting@raidon.com.tw,我們將儘速回覆您。

RAIDON 為 銳鉸科技股份有限公司 旗下品牌之一
本說明相關產品內容歸 銳鉸科技股份有限公司 版權所有

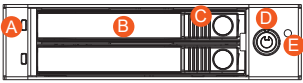
4

RAIDON

iR2975 Quick Installation Guide

Product Diagrams and Contents of Product Package

Front View



Rear View



- A LED Indicator
- B Removable drive tray
- C HDD Tray Ejection
- D HDD tray key lock
- E Mute Button
- F 15 PIN Power Connector
- G SATA Port
- H Hardware or GUI Mode selection switch
- I Jumper setting for RAID Mode

After you open the outer package, make sure that the following items are contained in the package:

產品配件表



iR2975 body x1



Quick Guide x1



Screws and key

- Please check the product and accessories for any defect or missing parts. If you have any questions, please contact your product supplier.
- Please visit the official website (www.raidon.com.tw) to download user manuals, drivers and other related resources.



V0.1 (Sep. 2023)

1

LED Instruction

Corresponding LED to HDD Position	
LED A	HDD 2
LED B	HDD 1
Status	HDD Status Light
HDD Idle	Blue light always on
Data access	Purple light flashing
No hard drive / hard drive failure	Red light always on
Rebuilding - Source	Blue light always on
Rebuilding - Target	Red light flashing

※ In Hardware Mode, JBOD status, if there is only one HDD, the blue light will be OFF, and the red light will flash when accessing.

Hardware Installation

Please install iR2975 as the following instruction.

1. Please use the RAID control keys on the backplane to select the RAID mode, the factory default is RAID 1 mode. Also use the Hardware or GUI switch to switch settings, the factory default is Hardware mode.

Jumper setting for RAID Mode



JBOD(PM)

RAID 1

RAID 0

SPAN(BIG)

Hardware or GUI Mode selection switch



Hardware mode

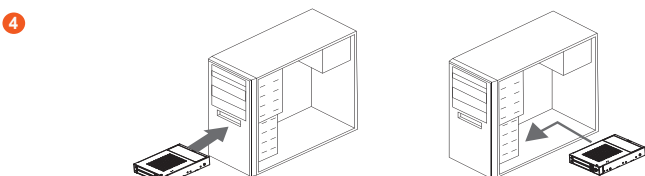
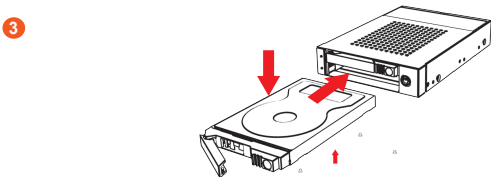
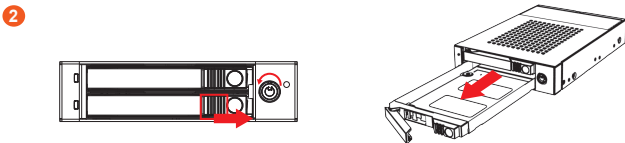
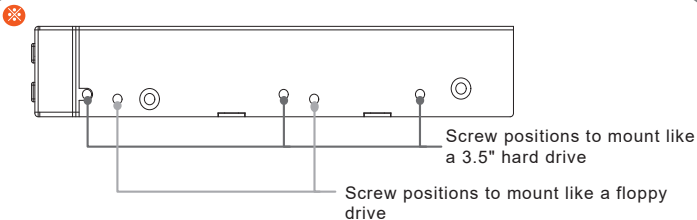
GUI mode

- ※ In RAID 1, two hard drives need to be mounted at the same time
- ※ In RAID 1, the data will be rebuilt first (HDD 1>> HDD2)

2

※ Mounting Positions

2. After unlocking the HDD tray key lock with the key attached to the accessory, push the HDD tray ejection to the right and the removable drive tray will pop open to remove the removable tray.
3. For 2.5" HDD/SSD, please secure it by use four the smaller screws included in the accessory kit. and re-insert the removable tray when completed.



3

4. Install the product unit into the computer chassis and make the necessary connections and mount the product unit properly and securely to the bay position desired.
5. When hardware installation is completed, you can turn on the power of the main unit to proceed with relevant settings and applications.
6. Installation completed. Your operating system should automatically detect the hard drives within. Please proceed to format the drives. Once formatting is completed, you may then start to operate the device.
7. The GUI mode does not support JBOD mode, if you want to use GUI mode, Please in Hardware mode, then in the RAID 1/0/BIG state, turn on the iR2975 power to complete the power on, then turn off the power and adjust to GUI mode.

Precautions Before Application

1. We suggest you using 2 brand new 2.5-inch SATA hard drives with the same brand and model number for the best performance. When any one of the hard drives is failed, please ensure that the capacity of the new hard drive is the same or bigger than the original one.
2. Please ensure that the hard drives are free of bad tracks before using, otherwise, it may cause system crash in turn resulting in data loss.
3. We strongly suggest you that the RAID mode should be decided before starting use iR2975. If you need to reset the RAID mode after using iR2975, please remember to backup your data on the other hard drives or the data may lose.
4. A reboot is required after adding or changing RAID mode to ensure that the update is completed to the new RAID mode.
5. We strongly recommend you to keep an extra copy at your important personal data other than stored in your iR2975 product. RAIDON will not be responsible of your data loss problem.
6. In order to maintain optimal data security, employing hard drives equipped with Shingled Magnetic Recording (SMR) technology for Redundant Array of Independent Disks (RAID) configurations is not recommended.

Thank you for choosing RAIDON's product.

The information provided in this manual was checked before publication, but the actual product specifications may have changed before shipping; Latest product specifications and updates can be found at www.RAIDON.com.tw or through your sales representative. No separate notifications will be provided by our company.

If you have any questions about RAIDON products or would like to receive the latest product information, instruction manuals, or firmware, please contact Supporting@raidon.com.tw for assistance.

RAIDON is one brand under RAIDON TECHNOLOGY, INC.
All product-related content in this manual are copyrighted by RAIDON TECHNOLOGY, INC.

4